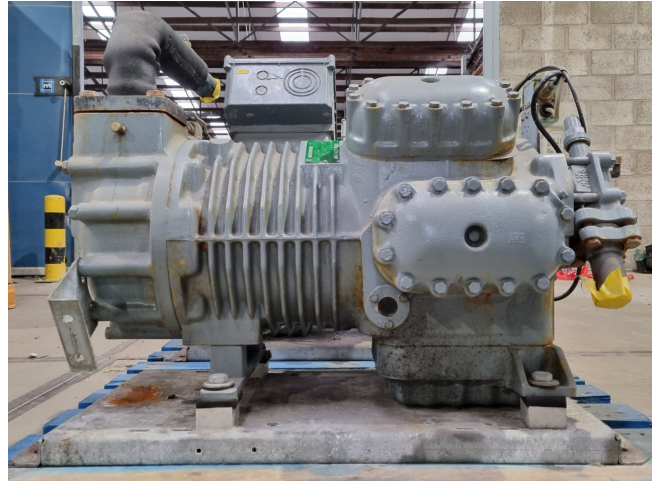


## DWM D8SJ1-600X-BWM/D

### Specifications

Marka	DWM
Typ	D8SJ1-600X-BWM/D
Czynnik chłodzący	Freon
kW at 0°C/+40°C	142,5
kW at -5°C/+40°C	117,8
kW at -10°C/+40°C	96,3
kW at -20°C/+40°C	61,7
kW at -30°C/+40°C	36,2
Podstawa na stalowej ramie	✓
Ciśnieniowe przełączniki bezpieczeństwa	✓
Okno widokowe	✓
m <sup>3</sup> / h	180
Waga kg.	367 kg
Rozmiary	850x450x700 mm (LxWxH)
Stock	2



### Description

#### Used DWM D8SJ1-600X-BWM/D

Used DWM Copeland D8SJ1-600X-BWM/D semi-hermetic piston compressor on Freon with a sight glass and pressure safety switches. The compressor has a displacement of 180 m<sup>3</sup>/h - 1450 RPM - 50 Hz.

\*Why choose for HOSBV? We are not only the largest used refrigeration specialist in Europe, but also, we deliver all equipment including an extensive test, warranty and industrial cleaning. \*Optional we can also perform a new paint job and arrange the logistics.

